

N.W. 1/4 OF
SECTION 23, T.5N., R.2W., S.L.B. & M.

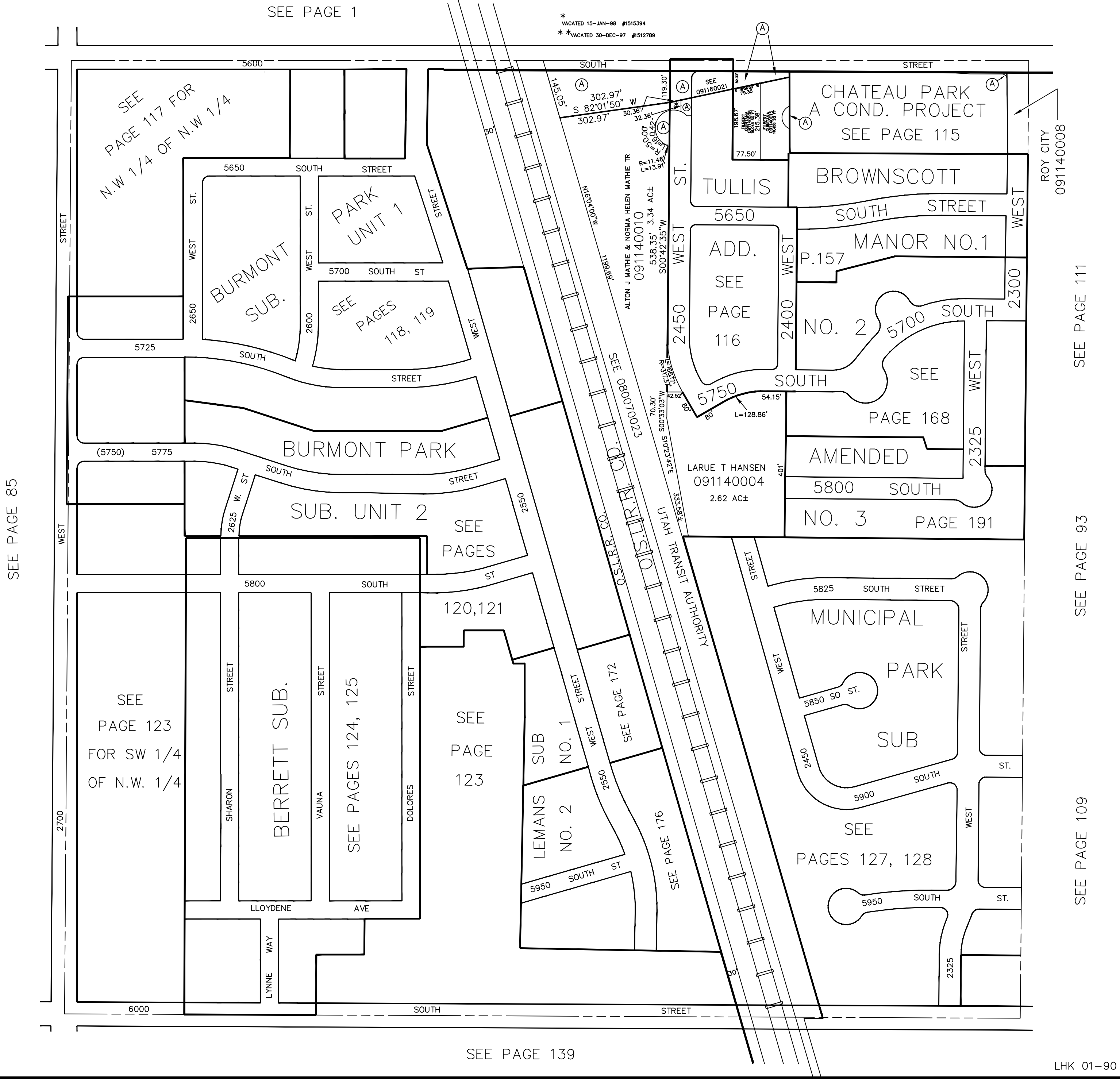
IN ROY CITY
SCALE 1" = 200'

TAXING UNIT: 41

UTAH DEPT
OF TRANS
091140011
FOR THE WIDENING
OF 5600 S. ST. 1.54 AC±

SEE PAGE 1

* VACATED 15-JAN-88 #1515394
* VACATED 30-DEC-97 #1512789



SEE
PAGE 117 FOR
N.W. 1/4 OF N.W. 1/4

PARK
UNIT 1

SEE
PAGES
118, 119

BURMONT PARK

SUB. UNIT 2

SEE
PAGE 123
FOR SW 1/4
OF N.W. 1/4

BERRETT SUB.

SEE PAGES 124, 125

SEE
PAGE
123

LEMANS
SUB
NO. 1
NO. 2

SEE PAGE 176

SEE PAGE 172

MUNICIPAL
PARK
SUB

SEE
PAGES 127, 128

CHATEAU PARK
A COND. PROJECT
SEE PAGE 115

TULLIS

BROWNSCOTT

ADD.
SEE
PAGE
116

MANOR NO. 1

NO. 2

SEE
PAGE 168

AMENDED

NO. 3
PAGE 191

LARUE T HANSEN
091140004
2.62 AC±

ALTON J MATHIE & NORMA HELEN MATHIE TR
091140010
3.34 AC±

O.S.T.R.R. CO. CD.
091140008

UTAH TRANSIT AUTHORITY

ROY CITY
091140008

SEE PAGE 111

SEE PAGE 93

SEE PAGE 109

SEE PAGE 139